

The importance of the seated condylar position in orthodontic correction

Frank E. Cordray, DDS, MS¹

It has been proposed that the discrepancy between the seated and unseated condylar position be identified and eliminated when the occlusion is reorganized. Identification of this discrepancy is most accurately accomplished through the use of diagnostic casts that have been taken from a deprogrammed patient and mounted in the seated condylar position on a semiaadjustable articulator through an estimated facebow transfer. The amount and direction of any discrepancy is determined three dimensionally with condylar position instrumentation. (*Quintessence Int* 2002;33:284–293)

Key words: articulator, condylar displacement, condylar distraction, orthodontics, seated condylar position, unseated condylar position

A previous article outlined steps that orthodontists must take to advance the specialty into the new millennium¹:

1. Specific, comprehensive, and universal treatment goals must be developed.
2. Occlusion, temporomandibular joint function, facial esthetics, and periodontics must receive greater emphasis in graduate orthodontic programs.
3. The quality of orthodontic records must be upgraded to include diagnostic study casts mounted in the seated condylar position.
4. A comprehensive orthodontic classification system must be developed.
5. Orthodontic diagnosis must become more accurate.
6. Orthodontic treatment time must be minimized.

These issues constitute the foundation for state-of-the-art orthodontic treatment in the 21st century, which will include the following:

1. The use of a repositioning splint to eliminate muscle symptoms and attain a comfortable, stable, and repeatable seated condylar position
2. Instrumental analysis of diagnostic study casts: mounting of diagnostic study casts in the seated condylar position on a semiaadjustable articulator through the use of at least an estimated facebow transfer

3. Measurements of jaw deflections caused by tooth-dictated positions (currently measurable with the Condylar Path Indicator [CPI] [Panadent], the Mandibular Position Indicator [MPI] [SAM], and Cranio-Mandibular Position [CMP] [Denar] instrumentation)
4. Computer-assisted treatment planning, including corrected cephalometrics (conversion of lateral cephalograms from maximum intercuspation-centric occlusion [MIC-CO] to the seated condylar position); computerized cephalometric analyses corrected for jaw deflections; computerized growth determinations; and computer-aided treatment forecasts [Visualized Treatment Objectives [VTOs]]
5. Video imaging as an aid to optimizing dental, skeletal, and soft tissue esthetics

Howat et al² have stated, "Orthodontic assessment of patients has evolved as treatment goals have changed," which leads to the discussion of a fundamental aspect of orthodontic treatment: What are the goals of orthodontic correction? Ultimately it comes down to clinical results. Two overriding concerns for those delivering orthodontic care are improved esthetics (facial and dental) and increased longevity of the dentition and associated structures (periodontium and temporomandibular joints).

How are these goals accomplished? Consistently excellent results are achieved by the application of sophisticated treatment goals and utilization of a sophisticated appliance system. Two areas of prime importance for both the practitioner (from a practice management standpoint) and the patient (from a satisfaction standpoint) are satisfying the patient's chief concern and treating the patient in the shortest time possible, to achieve the desired result.

¹Assistant Clinical Professor, Department of Orthodontics, Ohio State University, Columbus, Ohio.

Reprint requests: Dr Frank E. Cordray, 96 Northwoods Boulevard, Worthington, Ohio 43235. E-mail: kcord74385@aol.com

Presented at the 100th Annual Session of the American Association of Orthodontists, Chicago, May 2000.



Fig 1 Seated condylar position: superior, anterior, and midsagittal.



Fig 2 Premature occlusal molar contact visible on casts mounted on an articulator in the seated condylar position.

ORTHODONTIC TREATMENT GOALS

The application of specific, comprehensive orthodontic treatment goals is paramount to the execution of the aforementioned principles.

Facial esthetics

Improved esthetics is what drives most patients to seek orthodontic care. The importance of esthetics for self-image cannot be overstated. The psychological and social development of patients is related in increasing amounts to attractiveness and a favorable self-image. A sensitivity to patient expectations and motivations, as well as treatment possibilities, must be developed if the orthodontist is to end up with consistently satisfied patients.

Dental esthetics

As a result of his pioneering research on the common characteristics of untreated ideal occlusions, Andrews³ proposed "six keys to normal occlusion" as static occlusal goals for orthodontic correction. These keys are the ideal for static dental alignment, thus providing a guideline for the precise positioning of each tooth in all three planes of space.

Periodontal health

Periodontal health in the context of orthodontic treatment goals means both adequate hard and soft tissue support and management of soft tissue for stability and esthetics.

Functional occlusion and seated condylar position

A fundamental aspect of orthodontic correction is the need for coordination of tooth position with jaw function.⁴⁻⁷ Roth^{8,9} added further keys that relate Andrews' static occlusal goals³ to occlusal function and developed the orthodontic treatment mechanics that make it possible to attain functional occlusion treatment goals orthodontically.

A number of practitioners have advocated mounting diagnostic study casts in the seated condylar position,¹⁰⁻²³ while others^{3,8,9,24-34} have outlined practical techniques for accomplishing condylar position treatment goals orthodontically. If the treatment goal is coordinated tooth and jaw function (as is taught in all dental schools throughout the nation), then diagnosis from and treatment toward the seated condylar position is of paramount importance.

SEATED CONDYLAR POSITION

Definition

The *seated condylar position* is defined as superior, anterior, and midsagittal, centered transversely (Fig 1). This is the essence of optimal temporomandibular joint form and function.^{28,35,36} It has been shown that the overwhelming majority of the human population exhibits an occlusal prematurity on the most posterior tooth.^{21,37-39} Traditional orthodontic study casts (hand-held casts trimmed in MIC-CO) do not reflect this fact. When a premature occlusal contact (Fig 2) is present, the condyle is distracted or displaced down

and away from the optimal seated position, in order to interspace the teeth into MIC-CO (the occlusion-dictated condylar position).

Condylar distraction or displacement is defined as the difference in condylar position between the seated and unseated (occlusion-dictated) positions (the position of the condyle caused by intercuspation of the teeth). Most condylar displacements are vertical displacements, not horizontal displacements, because the condyle drops inferiorly in the fossa as the mandible shifts superiorly in the region of the incisors.

Measurement techniques

Previous attempts to measure the seated condylar position have utilized methods such as intraoral visual estimation,⁴⁰ measurement of the hit-and-slide at the occlusal level,⁴¹ radiographs (panoramic, transcranial, or lateral cephalometric radiography, corrected tomography, and arthrography),⁴² and magnetic resonance imaging or computed tomography scans.⁴³ However, these do not allow measurement of the mandibular functional shift from the unseated (occlusion-dictated) condylar position to the seated condylar position in all three planes of space to 0.2 mm. In fact, it has been shown that condylar position cannot be accurately determined radiographically.⁴⁴⁻⁶² The new gold standard for the measurement of condylar position was proposed by the author in 1997.⁶³ Only three-dimensional condylar graph measurements made from articulated study casts that have been mounted in the seated condylar position from a deprogrammed patient will yield this information.

Identification of the discrepancy between the seated and unseated (occlusion-dictated) condylar position is most accurately accomplished with diagnostic study casts taken from a deprogrammed patient; these casts must be mounted in the seated condylar position on a semiadjustable articulator through the use of at least an estimated facebow transfer.^{27,30-34,64-68} The amount (millimeters) and direction (anteroposterior, vertical, and transverse) of any discrepancy between the seated and unseated condylar position can be determined with ease through the use of condylar position instrumentation available today (CPI; MPI; CMP; Vericheck, Denar; modified Buhnergraph, Whip Mix).

Advantages and indications

The condylar graph measurement technique has a number of advantages:

1. It is simple and easy to perform.
2. It is available to every dental practitioner.
3. It is inexpensive (the most cost-effective method

available to determine condylar position).

4. It is noninvasive.
5. It is highly accurate (the most accurate method for determining condylar position in all three planes of space to within 0.2 mm anteroposteriorly and vertically and 0.1 mm transversally).

The seated condylar position is a three-dimensional entity that must be assessed with a three-dimensional measuring device. This is a much more sophisticated and accurate method for measuring condylar position.^{27,34,60,64-67}

Howat et al² have stated that the discrepancy between the seated and unseated condylar position must be identified and eliminated when the occlusion is to be reorganized, which is required:

1. When posterior occlusal stability is to be restored by occlusal adjustment or tooth restoration.
2. When mandibular dysfunction is to be treated.
3. Before placement of multiunit restorations.
4. Before fabrication of complete dentures.
5. When orthodontic treatment is planned.
6. When the condyle is to be positioned during orthognathic surgery.

Success or failure of treatment in each of these areas is completely dependent on the ability of the operator to attain a comfortable, stable, repeatable seated condylar position as a reference point.

Importance to orthodontic correction

The importance of the seated condylar position in orthodontic correction is as follows: orthodontics provides the ability to move every tooth in all three planes of space, making orthodontic treatment comparable to complete-mouth restoration or a complete denture setup.^{69,70} Thus it is imperative to have a comfortable, stable, and repeatable seated condylar position to work from.

It has been asserted that in 25% to 30% of orthodontic cases the decision-making process would be affected by an articulator mounting in the seated condylar position, because of the presence of a significant condylar distraction.^{9,71-75} However, the clinical experience of the author is that this information affects every orthodontic case that is treated. Seven important decision-making areas are affected:

1. Diagnosis:
 - a. Magnitude (mm) of the horizontal discrepancy (Class II, Class III) to be corrected
 - b. Magnitude (mm) of the vertical discrepancy (open bite, deep bite) to be corrected

- c. Magnitude (mm) of the transverse discrepancy to be corrected
- d. Direction of mandibular growth
- e. Direction of mandibular rotation anticipated with treatment
2. Treatment planning:
 - a. Extraction versus nonextraction
 - b. Nonsurgical versus surgical treatment
3. Anchorage requirements (minimum, moderate, or maximum)
4. Treatment mechanics (dictated by all of the above, especially the diagnosis and anchorage requirements)
5. Occlusal finishing (arch coordination in all three planes of space)
6. Evaluation of orthodontic treatment effects
7. Evaluation of orthodontic relapse

It is faster, easier, less expensive, and more accurate to mount diagnostic study casts in the seated condylar position than to trim them in MIC-CO (habitual position).^{2,29,34,76} Diagnostic accuracy is increased because muscle splinting is eliminated. Muscle splinting is part of the neuromuscular protective mechanism and postures the mandible into the best tooth fit. It does not allow the operator to detect the discrepancy between the seated and unseated condylar position clinically at the chairside when manipulating the jaw. Muscle splinting may disappear during orthodontic treatment, allowing the mandible to drop back, revealing a larger discrepancy than at the start of treatment (dual bite).

The problem lies in the fact that the effect of muscle splinting is not detectable clinically.^{9,23,26,77}

Because the neuromusculature is programmed to close the mandible into the best tooth fit, it is difficult to identify the seated condylar position through clinical evaluation or mandibular manipulation alone. Patients avoid interferences and occlude into the best tooth fit, even at the expense of the joints. Occlusal disharmonies cannot be studied (or even consistently detected) in the functioning mouth because the muscles and nerve reflexes protect the teeth by overriding the joint's guidance.

Neuromuscular deprogramming is the key to reproducibility.^{9,23,26,27,32,60,78-92} Without deprogramming, it is highly unlikely that the seated condylar position will be captured clinically. Therefore what is seen in the mouth may not be what is really being treated.^{7,9,12,20,23,26,27,30,32,60,78,93-99} When indicated, a repositioning splint is an extremely valuable, reversible, and conservative appliance that aids in the therapeutic, diagnostic, and treatment planning phases of orthodontic correction.^{9,26,30,60,93-99}

This information directly affects cephalometric evaluations as well. First, a significant condylar dis-



Fig 3 Lateral cephalogram of a patient with severe vertical distraction of the condyles, resulting in a noticeable joint space (arrows) visible superior to the condyle.

placement can often be detected on a routine lateral cephalogram; when the condyle is severely distracted vertically, a noticeable joint space is visible superior to the outline of the condyle (Fig 3). This is not normal; typically these structures are superimposed when the condyle is seated near its undistracted position. If a condylar displacement is suspected on a lateral cephalogram or corrected tomogram, then it would be pertinent to determine the full extent of the condylar displacement by mounting the dental casts and accurately measuring the discrepancy. In addition, it has been shown that cephalometric measurements performed in the seated condylar position (rather than in the unseated or MIC-CO condylar position) yield more accurate diagnostic information regarding the magnitude of the skeletal and dental discrepancies in the horizontal and vertical planes.¹⁰⁰⁻¹⁰⁵

The information gained from an articulator mounting in the seated condylar position and three-dimensional condylar graph measurements can be applied across the broad spectrum of cases routinely encountered in clinical practice. In a high percentage of patients, the interarch relationships in the seated and unseated positions are substantially different. This can be evaluated by comparing the intraoral interarch relationship to the interarch relationship observed on mounted casts in the seated position. Thus, these cases could each be treatment-planned a number of different ways, depending on the overriding treatment objectives of the clinician.

For example, a basic treatment planning decision that is made for all orthodontic patients is whether or not to extract teeth and, if so, which teeth? In most cases, an argument could be made for either a nonextraction or an extraction treatment plan, depending on a number of factors, one of which is the magnitude of the horizontal, vertical, and/or transverse interarch

discrepancy present. This information is precisely revealed by an articulator mounting in the seated condylar position. In addition, an articulator mounting may reveal an interarch discrepancy that may have a surgical treatment option as well as conventional orthodontic treatment options.

Furthermore, the anchorage requirements and choice of treatment mechanics is directly affected, depending on the magnitude of the horizontal or vertical interarch discrepancy present pretreatment, which is precisely revealed by an articulator mounting in the seated condylar position. However, the treatment planning and mechanical choices are limited if the overriding treatment objective is to reduce the pretreatment condylar displacement. Seating the condyle with orthodontic correction requires precise vertical control. Reduction of the pretreatment condylar displacement can be achieved orthodontically through the use of various treatment methods (extraction, nonextraction, high-pull facebow, transpalatal bars, bite blocks, elastics, mounted tooth positioner, splint wear, orthognathic surgery, and equilibration).

Occlusal finishing can be more accurately accomplished if the pre-deband casts are first mounted in the seated condylar position. The mounting is then used in two ways. First, it is used to assess the interarch relationships near the end of treatment, allowing the clinician to adjust tooth positioning as needed (anteroposteriorly, vertically, or transversally). Often this mounting will reveal either posterior torque deficiencies or transverse arch discrepancies (inclined plane contacts or arch coordination problems) that have to be addressed to gain posterior intercuspation without condylar displacement. Second, the mounting is used to fabricate a tooth positioner from an ideal setup with the condyle seated. The positioner is used to maintain condylar seating while settling of the dentition is controlled vertically.

Moreover, the seated condylar position is the benchmark from which true comparisons of treatment effectiveness (both skeletal and dental) can be made. It is the only valid reference point for comparison of treatment effects in orthodontics. The unseated (occlusion-dictated) condylar position (condylar position in MIC-CO) has inherent error as a reference point because of the lack of understanding of the magnitude of the mandibular functional shift (hit and slide) present before and after treatment. Failure to understand this principle has been the source of great confusion, misunderstanding, and miscommunication in both dentistry in general and orthodontics in particular.^{58,106} To obtain precise measurements of the skeletal and dental changes with treatment, it is essential to begin with a stable, repeatable condylar position and end with a stable, repeatable condylar position and

then assess the result. This is how treatment efficacy is accurately determined.

In the evaluation of orthodontic relapse, certain phenomena such as dual bites (both vertically and horizontally), relapse of horizontal (anteroposterior: Class II, Class III) correction, relapse of vertical (superoinferior: open bite, deep bite) correction, and the development of symptoms of temporomandibular dysfunction after orthodontic correction have previously been explained as dental compensations to orthodontic corrections. However, it is now understood that they are often skeletal compensations (skeletal relapse) resulting from treatment to an unseated condylar position.^{9,30-32,34,60,64-67,107} Thus it is apparent that diagnostic accuracy is enhanced by an articulator mounting in the seated condylar position.

This concept is further reinforced by Ackerman and Proffit,¹⁰⁷ who have stated:

It is clear that the condyles should not be displaced during treatment by more than a small distance from their relaxed (retruded) position. In addition to the possibility of TMD symptoms, treatment methods that reposition the mandible more than a small amount are likely to fail in the long run due to the musculature returning the mandible to a seated condylar position. When this occurs after treatment it is perceived as relapse. ("The boundaries of dental compensation for an underlying jaw discrepancy are established by...the neuromuscular influence on mandibular position.") Neuromuscular harmony is at risk when the condyles are not within 1 mm or so of a seated position when the teeth are in MIC. This is an important soft tissue limitation on orthodontic treatment.

CASE REPORT

A 26-year-old woman presented with complaints of muscle contraction headaches, a nightly clenching habit, and crowding. Intraorally she presented with a Class I moderately crowded occlusion (Figs 4a to 4c). Her mounted casts (made after deprogramming with a complete-coverage maxillary stabilization splint with anterior guidance to relieve her symptoms) indicated that the magnitude of the horizontal and vertical discrepancies was greater when her dentition was in the seated condylar position: The horizontal relationship changed from Class I to Class II, and the vertical relationship revealed a dental and skeletal open bite with moderate crowding (Figs 4d to 4f). The distobuccal cusp of the mandibular second molar had been fractured off (Fig 4g), and the premature occlusal contact

Figs 4a to 4c Pretreatment intraoral views of the patient in maximum intercuspation–centric occlusion.



Fig 4a



Fig 4b



Fig 4c

Figs 4d to 4f Pretreatment casts mounted in the seated condylar position (after the patient had been deprogrammed with a complete-coverage maxillary stabilization splint with anterior guidance to relieve her symptoms). Note the premature contacts on the mandibular left molars, the fractured distobuccal cusp of the mandibular left second molar, and the increased magnitude of the horizontal (Class II) and vertical (open bite) interarch discrepancies.



Fig 4d

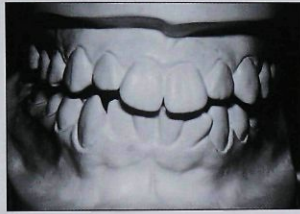


Fig 4e

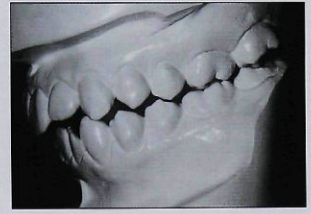


Fig 4f



Fig 4g Fractured distobuccal cusp of the mandibular left second molar (*arrow*).

Figs 4h to 4j Posttreatment intraoral views of the patient in maximum intercuspation–centric occlusion.



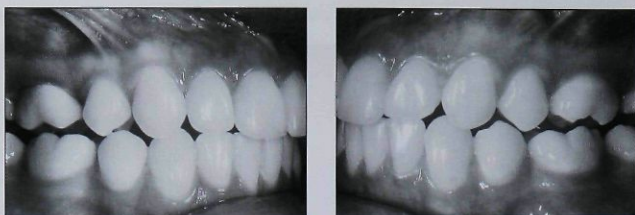
Fig 4h



Fig 4i



Fig 4j



Figs 4k and 4l Posttreatment intraoral views of lateral excursions, demonstrating the achievement of a mutually protected occlusion with canine guidance.

Figs 4m to 4o Posttreatment casts mounted in the seated condylar position. Note the reduction of the horizontal and vertical interarch discrepancies.



Fig 4m



Fig 4n



Fig 4o

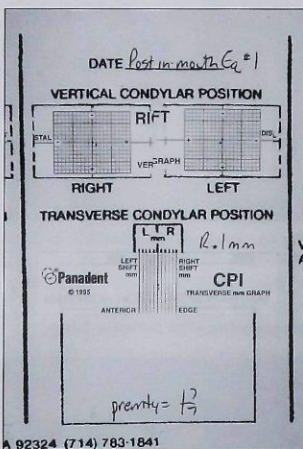
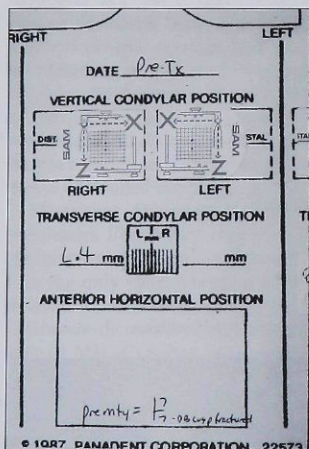


Fig 4p (left) Pretreatment CPI condylar graph measurements.

Fig 4p (right) Posttreatment CPI condylar graph measurements. Note the reduction of condylar distraction with orthodontic correction and equilibration in the seated condylar position.

was on these same mandibular second molars. The goal of orthodontic correction in this case was to gain ideal alignment and occlusal interdigitation while at the same time decreasing the condylar distraction to within normal limits (within 1 mm of the seated condylar position).

Treatment included extraction of four second premolars (to decrease the vertical dimension of occlusion) instead of four first premolars; thus, the treatment mechanics and anchorage requirements for this patient were substantially different (moderate to maximum for first premolar extractions and minimum for second premolar extractions). Finishing was accomplished with full-sized (21 × 25) braided rectangular arch wires, short vertical (Class II) elastics, a mounted tooth positioner, and complete-mouth equilibration. The symptoms were eliminated while function and esthetics were improved; total treatment time was 26 months (Figs 4h to 4o). The pretreatment and post-treatment CPI recordings are shown in Figs 4p and 4q; the pretreatment condylar distraction or displacement has been reduced by orthodontic correction and complete-mouth equilibration.

CONCLUSION

It has been shown in all areas of dentistry that the seated position is the most stable, comfortable, and repeatable condylar position from which extensive restoration of the dentition should be diagnosed and treatment planned. The techniques and instrumentation that make assessment of this position possible are simple and predictable and have proven to be faster, easier, less expensive, and more accurate than traditional orthodontic diagnostic techniques. Diagnostic accuracy and treatment execution are enhanced by the availability of an articulator mounting in the seated condylar position.

REFERENCES

- Cordray FE. A crisis in orthodontics? It's time to look within. *Am J Orthod* 1992;101:472-476.
- Howat AP, Capp NJ, Barrett NVJ. A color atlas of occlusion and malocclusion. St Louis: Mosby, 1991.
- Andrews LF. The six keys to normal occlusion. *Am J Orthod* 1972;63:296-309.
- Thompson JR. Function—The neglected phase of orthodontics. *Angle Orthod* 1956;26:129-143.
- Perry HT. Mandibular function: An orthodontic responsibility. *Am J Orthod* 1975;67:317-323.
- Perry HT. Temporomandibular joint and occlusion. *Angle Orthod* 1976;46:284-293.
- Parker WS. Centric relation and centric occlusion—An orthodontic responsibility. *Am J Orthod* 1978;74:481-500.
- Roth RH. Functional occlusion for the orthodontist. *J Clin Orthod* 1981;15:1-80.
- Roth RH. The maintenance system and occlusal dynamics. *Dent Clin North Am* 1976;20:761-788.
- Roth RH. Temporomandibular pain-dysfunction and occlusal relationships. *Angle Orthod* 1973;43:136-153.
- Williamson EH. Occlusion and temporomandibular joint dysfunction. *J Clin Orthod* 1981;15:333-350.
- Williamson EH. The role of craniomandibular dysfunction in orthodontic diagnosis and treatment planning. *Dent Clin North Am* 1983;27:541-560.
- Posselt V. Physiology of occlusion and rehabilitation, ed 2. Oxford, England: Blackwell Scientific, 1968.
- Ackerman JL, Proffit WR. The characteristics of malocclusion: A modern approach of classification and diagnosis. *Am J Orthod* 1969;56:443-454.
- Proffit WR. Contemporary Orthodontics. St Louis: Mosby, 1986.
- Wood DP, Elliott RW. Reproducibility of the centric relation bite registration technique. *Angle Orthod* 1994;64:211-221.
- Timm TA, Herremans EL, Ash MM. Occlusion and orthodontics. *Am J Orthod* 1976;70:138-145.
- Aubrey RB. Occlusal objectives in orthodontic treatment. *Am J Orthod* 1978;74:162-175.
- Moffett BC. A biologic consideration of centric relation based on skeletal and connective tissue responses. In: Celenza FV, Nasedkin JN (eds). *Occlusion: The State of the Art*. Chicago: Quintessence, 1978:13-18.
- Gilboe DB. Centric relation as the treatment position. *J Prosthet Dent* 1985;53:685-689.
- Ramfjord SP, Ash MM (eds). *Occlusion*, ed 3. Philadelphia: Saunders, 1985.
- Wood GN. Centric relation as the treatment position in rehabilitating occlusion: A physiologic approach. 2. The treatment position. *J Prosthet Dent* 1988;60:8-15.
- Lundein H. Centric relation records—The effects of muscle action. *J Prosthet Dent* 1972;31:244-251.
- Stuart CE. Good occlusion for natural teeth. *J Prosthet Dent* 1964;14:716-724.
- Williamson EH, Steinke RM, Morse PK, Swift TR. Centric relation: A comparison of muscle-determined position and operator guidance. *Am J Orthod* 1980;77:153-145.
- Coulson R. Should the phenomena of muscle splinting be ruled out prior to making an orthodontic diagnosis? Annual Session of the American Association of Orthodontists, St Louis; May 5, 1992.
- Crawford S. The relationship between condylar axis position as determined by the occlusion and measured by the CPI instrument and signs and symptoms of temporomandibular joint dysfunction. *Angle Orthod* 1999;69:102-116.
- Okeson JP. Management of Temporomandibular Disorders and Occlusion, ed 3. St Louis: Mosby, 1985.
- Bennett JC, McLaughlin RP. Orthodontic management of the dentition with the pre-adjusted appliance. Oxford, England: Isis Medical Media, 1997.
- Dawson PE. Evaluation, diagnosis, and treatment of occlusal problems. St Louis: Mosby, 1989;28-33, 590-591.
- Guichet NF. Applied gnathology: Why and how. *J Anglont Dent Soc* 1972;26:14-19.

32. Huffman RW, Regenos JW. Principles of Occlusion. Columbus, OH: Hand R Press, 1978.
33. Slavicek RJ. Clinical and instrumental functional analysis for diagnosis and treatment planning. 1. *J Clin Orthod* 1988;22:358-370.
34. Slavicek RJ. Clinical and instrumental functional analysis for diagnosis and treatment planning. 4. Instrumental analysis of mandibular casts using the Mandibular Position Indicator. *J Clin Orthod* 1988;22:566-575.
35. Sicher H. Oral Anatomy, ed 4. St Louis: Mosby, 1965.
36. Hylander WL. Functional anatomy. In: Sarnat BG, Laskin DM (eds). The Temporomandibular Joint. Springfield, IL: Thomas, 1979.
37. Ingervall B. Tooth contacts on the functional and non-functional side in children and young adults. *Arch Oral Biol* 1972;17(1):191-200.
38. Agerberg G, Santstorm R. Frequency of occlusal interferences: A clinical study in teenagers and young adults. *J Prosthet Dent* 1988;59:212-217.
39. deLaat A, van Steenberghe D. Occlusal relationships and temporomandibular joint dysfunction. 1. Epidemiological findings. *J Prosthet Dent* 1985;54:835-842.
40. Magnusson T, Carlsson GE. Occlusal adjustment in patients with residual or recurrent signs of mandibular dysfunction. *J Prosthet Dent* 1983;49:706-710.
41. Johnston LE, Hoffman R. Gnathologic assessment of centric slides in post-retention orthodontic patients. *J Prosthet Dent* 1988;60:712-715.
42. Mohl ND. Reliability and validity of diagnostic modalities for temporomandibular disorders. *Adv Dent Res* 1993;7: 113-119.
43. Alexander SR, Moore RN, Dubois LM. Mandibular condyle position: Comparison of articulator mountings and magnetic resonance imaging. *Am J Orthod* 1993; 104:230-239.
44. Blaschke DD, Blaschke TJ. Normal temporomandibular joint bony relationships in centric occlusions. *J Dent Res* 1981;60:98-104.
45. Katzberg RW, Keith DA, Ten Eik WR, Guralnik WC. Internal derangements of the temporomandibular joint: An assessment of condylar position in centric occlusion. *J Prosthet Dent* 1983;49:250-254.
46. Dixon DC, Graham GS, Mayhew RB. The validity of transcranial radiology in diagnosing temporomandibular joint anterior disc displacement. *J Am Dent Assoc* 1984;108: 615-618.
47. Aquilino SA, Matteson SR, Holland GA, Phillips C. Evaluation of condylar position from temporomandibular joint radiography. *J Prosthet Dent* 1985;53:88-97.
48. Pullinger AG, Hollender L, Solberg WK, Petersson A. A tomographic study of mandibular condyle position in an asymptomatic population. *J Prosthet Dent* 1985;53: 706-713.
49. Pullinger AG, Solberg WK, Hollender L, Guichet D. Tomographic condyle position in diagnostic subgroups of TMD. *J Prosthet Dent* 1986;55:723-729.
50. Bean LR, Thomas CA. Significance of condylar positions in patients with temporomandibular disorders. *J Am Dent Assoc* 1987;114:76-77.
51. Ronquillo HI, Gray J, Tallants RH. Tomographic analysis of mandibular condyle position as compared to arthrographic findings of the temporomandibular joint. *J Craniomandib Disord* 1988;2:59-64.
52. Brand JW, Whinery JG, Anderson QN. Condylar position as a predictor of temporomandibular joint internal derangements. *Oral Surg Oral Med Oral Pathol* 1989; 67:469-476.
53. Dixon DC. Diagnostic imaging of the temporomandibular joint. *Dent Clin North Am* 1991;35:53-74.
54. Leidberg J, Rohlin M, Westesson PL. Observer performance in assessment of condylar position in temporomandibular joint radiographs. *Acta Odontol Scand* 1985;43:53-58.
55. Laskin D, Greenfield W, Gale E, Rugh J, Neff P, Alling C, Ayer WA (eds). The President's Conference on the Examination, Diagnosis, and Management of Temporomandibular Disorders. Chicago: American Dental Association, 1982.
56. Griffiths RH. Report of the President's Conference on the Examination, Diagnosis, and Management of Temporomandibular Disorders. *J Am Dent Assoc* 1983;106:75-77.
57. McNeil D, Mohl ND, Rugh JD, Tanaka TT. Temporomandibular disorders: Diagnosis, management, education and research. *J Am Dent Assoc* 1990;120:253-269.
58. Laskin DM, Greene CS. Diagnostic methods for temporomandibular disorders: What have we learned in two decades? *Anesth Prog* 1990;37:66-71.
59. Pullinger AG, Hollender L. Variation in condyle-fossa relationships according to different methods of evaluation in tomograms. *Oral Surg Oral Med Oral Pathol* 1986;62: 710-727.
60. Girardot RA. The nature of condylar displacement in patients with temporomandibular pain-dysfunction. *Orthod Rev* 1987;1:16-23.
61. American Dental Association Council on Dental Materials, Instruments, and Equipment. Recommendations in radiographic practices, 1984. *J Am Dent Assoc* 1984;109:764-765.
62. American Academy of Craniomandibular Disorders. Craniomandibular disorders: guidelines for evaluation, diagnosis, and management. Chicago: Quintessence, 1990: 25-33.
63. Cordray FE. The relationship of occlusion to TMD. Presented to the Northeast Society of Orthodontists, New York City, December 1997.
64. Utt TW, Meyers CE, Wierzbica TF, Hondrum SO. A three-dimensional comparison of condylar position changes between centric relation and centric occlusion using the Mandibular Position Indicator. *Am J Orthod* 1995;107: 298-308.
65. Hoffman PJ, Silverman SI, Garfinkel L. Comparison of condylar position in centric relation and in centric occlusion in dentulous patients. *J Prosthet Dent* 1973;30: 582-588.
66. Rosner D, Goldberg GF. Condylar retruded contact position and intercuspation position and correlation in dentulous patients. 1. Three dimensional analysis of condylar registrations. *J Prosthet Dent* 1986;56:230-239.
67. Esmay TR. The Relationship of Condylar Position Changes Between Centric Relation and Maximum Intercuspation in Orthodontic Treated and Non-Orthodontic Treated Individuals. [thesis]. New York: New York University, 1995 [unpublished].
68. Girardot A. Contemporary comprehensive clinical orthodontics. Ohio State Orthodontic Alumni Foundation Meeting, Columbus, Ohio, March 1998.

69. Okeson J. Inter-disciplinary treatment: TMJ. Annual Session of the American Association of Orthodontists, Dallas, Texas, May 1999.
70. McNeil C. Inter-disciplinary treatment: TMJ. Annual Session of the American Association of Orthodontists, Dallas, Texas, May 1999.
71. Williamson EH. Temporomandibular dysfunction in pre-treatment adolescent patients. *Am J Orthod* 1977;72:429-435.
72. Wigdorowica-Makowerowa N, Grodzki C, Panek H, Maslanka T, Plonka K, Palacha A. Epidemiological studies on prevalence and etiology of functional disturbances of the masticatory system. *J Prosthet Dent* 1979;41:76-82.
73. Grosfeld O, Jackowska M, Czarnecka B. Results of epidemiological examinations of the temporomandibular joint in adolescents and young adults. *J Oral Rehabil* 1985;12:95-105.
74. Nilner J, Lassing SA. Prevalence of functional disturbances and diseases of the stomatognathic system in 7-14 year olds. *Swed Dent J* 1981;5:173-188.
75. Egermark-Eriksson I, Carlson GE, Ingervall B. Prevalence of mandibular dysfunction and orofacial parafunction in 7-, 11-, 15-year-old Swedish children. *Eur J Orthod* 1981;3:163-172.
76. Viazis AD. Atlas of Orthodontics: Principles and Clinical Applications. Philadelphia: Saunders, 1993.
77. Wassell RW. Do occlusal factors play a part in dysfunction? *J Dent* 1989;17(5):101-110.
78. Karl PJ, Foley TF. The use of a deprogramming appliance to obtain centric relation records. *Angle Orthod* 1999;69:117-125.
79. Lucia VO. Modern Gnathological Concepts—Updated. Chicago: Quintessence, 1983:39-53.
80. Pruim GJ, DeJongh HJ, Ten Bosch JJ. Forces acting on the mandible during bilateral static bite at different force levels. *J Biomech* 1980;13:755-765.
81. Teo CS, Wise MD. Comparison of retruded axis articulator mountings with and without applied muscular force. *J Oral Rehabil* 1981;8:363-376.
82. Hannam AG. Regulation of the jaw bite force in man. *Arch Oral Biol* 1976;21:641-644.
83. Throckmorton GS, Groshan GJ, Boyd SB. Muscle activity patterns and control of temporomandibular joint loads. *J Prosthet Dent* 1990;63:685-695.
84. Lucia VO. A technique for recording centric relation. *J Prosthet Dent* 1964;14:492-505.
85. Long JH. Locating centric relation with a leaf gauge. *J Prosthet Dent* 1973;29:608-610.
86. Woelfel JB. Sliding and guiding the mandible into the retruded arc without pushing. *Compend Contin Educ Dent* 1991;12:614-623.
87. Kantor ME, Silverman SI, Garfinkel L. Centric relation recording technics—A comparative investigation. *J Prosthet Dent* 1972;28:593-600.
88. Lee SH, Woelfel JB. Suggested modifications for the leaf wafer system. *J Prosthet Dent* 1991;65:287-289.
89. Shankland WE, Ralston SJ. The fabrication and use of a leaf gauge to locate centric relation. *Ohio Dent J* 1983;57:43-45.
90. Wood DP, Floreani KJ, Galil KA, Teteruk WR. The effect of incisal bite force on condylar seating. *Angle Orthod* 1992;64:1-9.
91. Fenlon MR, Woelfel JB. Condylar position recorded using leaf gauges and specific closure forces. *Int J Prosthodont* 1995;6:402-408.
92. Greco PM, Vanarsdall RL. An evaluation of anterior temporalis and masseter muscle activity in appliance therapy. *Angle Orthod* 1999;69:141-146.
93. Calagna LS, Silverman SI, Garfinkel L. Influence of neuromuscular conditioning on centric registrations. *J Prosthet Dent* 1973;30:598-604.
94. Capp NJ, Clayton JA. A technic for evaluation of centric relation tooth contacts. 2. Following use of an occlusal splint for treatment of temporomandibular joint dysfunction. *J Prosthet Dent* 1985;54:697-705.
95. Koveleski JC, DeBoever J. Influence of occlusal splints on jaw position and musculature in patients with temporomandibular joint dysfunction. *J Prosthet Dent* 1975;33:321-327.
96. Hannam AG, DeCou RE, Scott JD, Wood WW. The relationship between dental occlusion, muscle activity, and associated jaw movement in man. *Arch Oral Biol* 1977;22:25-32.
97. Solberg WK, Clark GT, Rugh JD. Nocturnal EMG evaluation of bruxism patients undergoing short-term splint therapy. *J Oral Rehabil* 1975;2:215-223.
98. McNeill C, Danzig WM, Farrow WB, et al. Cranio-mandibular disorders—The state of the art. *J Prosthet Dent* 1980;44:434-437.
99. Williamson EH, Evans DL, Barton WA, Williams BH. The effect of biteplane use on terminal hinge axis location. *Angle Orthod* 1977;47:25-33.
100. Wood CR. Centrally-related cephalometrics. *Am J Orthod* 1977;71:156-172.
101. Williamson EH, Caves SA, Edenfield RJ, Morse PK. Cephalometric analysis: Comparisons between MI and CR. *Am J Orthod* 1978;74:672-677.
102. Shildkraut M, Wood DP, Hunter WS. The CR-CO discrepancy and its effect on cephalometric measurements. *Angle Orthod* 1994;64:333-342.
103. Roth RH. Treatment mechanics for the straightwire appliance. In: Graber TM, Swain BF (eds). *Orthodontics: Current Principles and Techniques*. St Louis: Mosby, 1985:665-716.
104. Ricketts RM, Roth RH, Chaconas SJ. *Orthodontic Diagnosis and Planning*. Denver: Rocky Mountain Orthodontics, 1982:293-298.
105. McHarris WH. Occlusion—With particular emphasis on the functional and parafunctional role of anterior teeth. *J Clin Orthod* 1979;13:606-620.
106. Pameijer J. *Periodontal and Occlusal Factors in Crown and Bridge Procedures*. Amsterdam: DeBussy, 1985.
107. Ackerman J, Proffit W. Soft tissue limitations in orthodontics: Treatment planning guidelines. *Angle Orthod* 1997;67:327-336.